

# PORTFOLIO OF PROGRAMS

ACADEMIC YEAR 2021/2022

In 2021/2022 Budapest Metropolitan University offers the following programs for students:

- I. PREPARATORY Programs
- II. BACHELOR'S programs
- III. MASTER'S programs
- IV. NORTHUMBRIA programs  
*(Students of METU have the option to finish their education (the third year) in Northumbria University in the UK.)*



## PREPARATORY programs

Program	Level	Duration	Starting date	Tuition fees for non- EU students <sup>1</sup> (EUR/Semester)
<b>Intensive English Language Preparatory Program</b>	Prior to BA/MA	<b>600 hours</b> (September - June)	September	2300
<b>Intensive English Language Preparatory Program</b>	Prior to BA/MA	<b>300 hours</b> (September - January) <b>OR</b> (February - June)	September/ February	2300
<b>Professional Foundation Semester for Business Programs</b>	Prior to BA/MA	1 semester	September/ February	2100
<b>Pre-Master Program</b>	Prior to BA/MA	1 semester	September/ February	2100

  
**NON-EU students**  
**10% discount**  
 from the first year's fees  
 if you pay until  
**31 May**



# PORTFOLIO OF PROGRAMS

ACADEMIC YEAR 2021/2022



## BACHELOR'S programs

Program	Level	Duration	Starting date	Tuition fees for non- EU students <sup>1</sup> (EUR/Semester)
<b>Animation</b>	BA	6 semester program	September	3500
<b>Graphic Design</b>	BA	6 semester program	September	3500
<b>Media Design</b>	BA	6 semester program	September	3400
<b>Motion Pictures Cameraman Specialisation</b>	BA	6 semester program	September	3500
<b>Photography</b>	BA	6 semester program	September	3400
<b>Environmental Design</b>	BA	6 semester program	September	3400
<b>Visual Representation</b>	BA	6 semester program	September	3400
<b>Business Administration and Management</b>	BSc	7 semester program	September/ February	2500
<b>Commerce and Marketing</b>	BSc	7 semester program	September/ February	2500
<b>Finance and Accounting</b>	BSc	7 semester program	September/ February	2500
<b>Tourism and Catering</b>	BSc	8 semester program	September/ February	2500
<b>Communication and Media studies</b>	BA	6 semester program	September	2500
<b>International Relations</b>	BA	6 semester program	September	2500



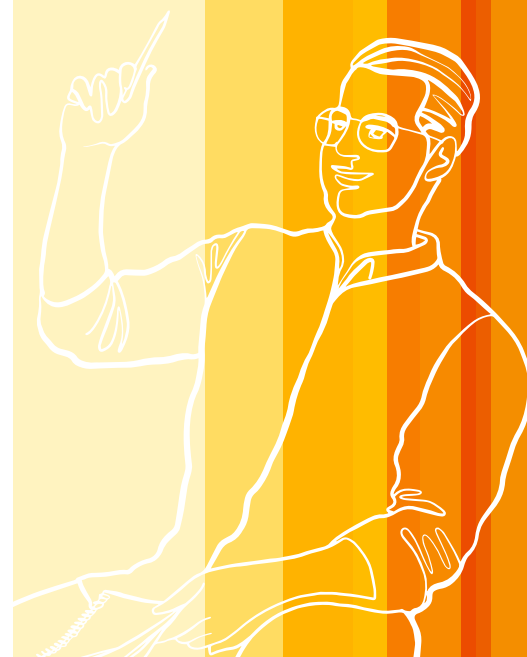
# PORTFOLIO OF PROGRAMS

ACADEMIC YEAR 2021/2022



## MASTER'S programs

Program	Level	Duration	Starting date	Tuition fees for non- EU students <sup>1</sup> (EUR/Semester)
<b>Animation</b>	MA	4 semester program	September	3600
<b>Cinematography</b>	MA	4 semester program	September	3600
<b>Media Design</b>	MA	4 semester program	September	3600
<b>Photography</b>	MA	4 semester program	September	3600
<b>Graphic Design</b>	MA	4 semester program	September	3600
<b>Art and Design Management</b>	MA	4 semester program	September	3600
<b>Fashion and Textile Design</b>	MA	4 semester program	September	3600
<b>Communication and Media</b>	MA	4 semester program	September/ February	2600
<b>Management and Leadership</b>	MSc	4 semester program	September/ February	2600
<b>Marketing</b>	MSc	4 semester program	September/ February	2600
<b>Tourism Management</b>	MSc	4 semester program	September/ February	2600
<b>Master in Business Administration (MBA)</b>	MBA	4 semester program	September/ February	2900



# PORTFOLIO OF PROGRAMS

ACADEMIC YEAR 2021/2022



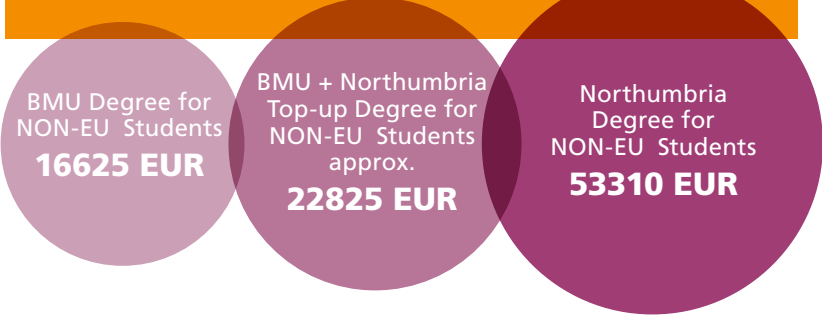
**IV.**

## NORTHUMBRIA programs

Program	Level	Duration	Starting date	Tuition fees for non- EU students <sup>1</sup> (EUR/Semester)
<b>BA (Hons) Accounting and Finance</b>	BA (Hons)	2 Semesters	September/ February	13325 EUR for the whole top-up for non-EU students
<b>BA (Hons) International Banking and Finance</b>	BA (Hons)	2 Semesters	September/ February	13325 EUR for the whole top-up for non-EU students
<b>BA (Hons) Business</b>	BA (Hons)	2 Semesters	September/ February	13325 EUR for the whole top-up for non-EU students
<b>BA (Hons) Business Enterprise Creation and Management</b>	BA (Hons)	2 Semesters	September/ February	13325 EUR for the whole top-up for non-EU students

The Northumbria Program is a unique opportunity for the students. This way the students have the opportunity to get a UK degree for a much lower tuition fee.

### TUITION FEE FOR NON- EU STUDENTS:



# PORTFOLIO OF PROGRAMS

## ACADEMIC YEAR 2021/2022

### APPLICATION REQUIREMENTS

#### BA and BSc programs

- Completed secondary school studies
- Intermediate command of English (e.g.: IELTS min 5.5)

#### BA Art programs

- Completed secondary school studies
- Intermediate command of English (e.g.: IELTS min 5.5)
- Portfolio of previous works

#### MA and MSc programs

- Bachelor's degree or above in any related field
- Upper- intermediate command of English (e.g.: IELTS min 6.0)

#### MA Art program

- Bachelor's degree or above in any related field
- Upper- intermediate command of English (e.g.: IELTS min 6.0)
- Portfolio of previous works



ADDITIONAL FEES	Refundable	Obligatory	Price
Application fee	✗	✓	150 EUR
Health insurance	✓	✓	150 EUR
Visa assistance fee	✗	✗	100 EUR

<sup>1</sup> Please note that the tuition fee may increase annually corresponding to the inflation rate published by the Hungarian National Bank.